

83° 00'

82° 50'

82° 40'

82° 30'

82° 20'

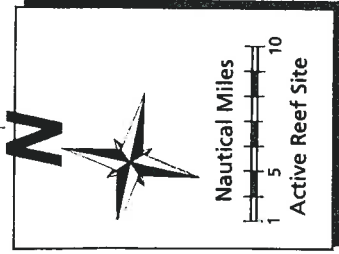
27° 30'

27° 20'

27° 10'

27° 00'

26° 50'



- D3
- D4

# Gulf of Mexico

Fallen Heroes Reef,  
CWO Kyle Jackson Trail

MD1

D6



D9

M11

M9

M10

M15

M16

Sarasota Sportsmen Association

Venice Inlet

V1

V2

V3

V4

V5

Venice Reef

M13

M14

Stump Pass

ENGLEWOOD

VENICE

SARASOTA

BRADENTON

Longboat Pass

Walker Reef

Anglers Club Reef

Hart's Family Reef

Miller Reef

Jantzen Reef

Evans Reef

Coker Reef

Powers Reef

Big Pass

Fisher Reef

Silvertooth Reef

Roehr Reef

M7

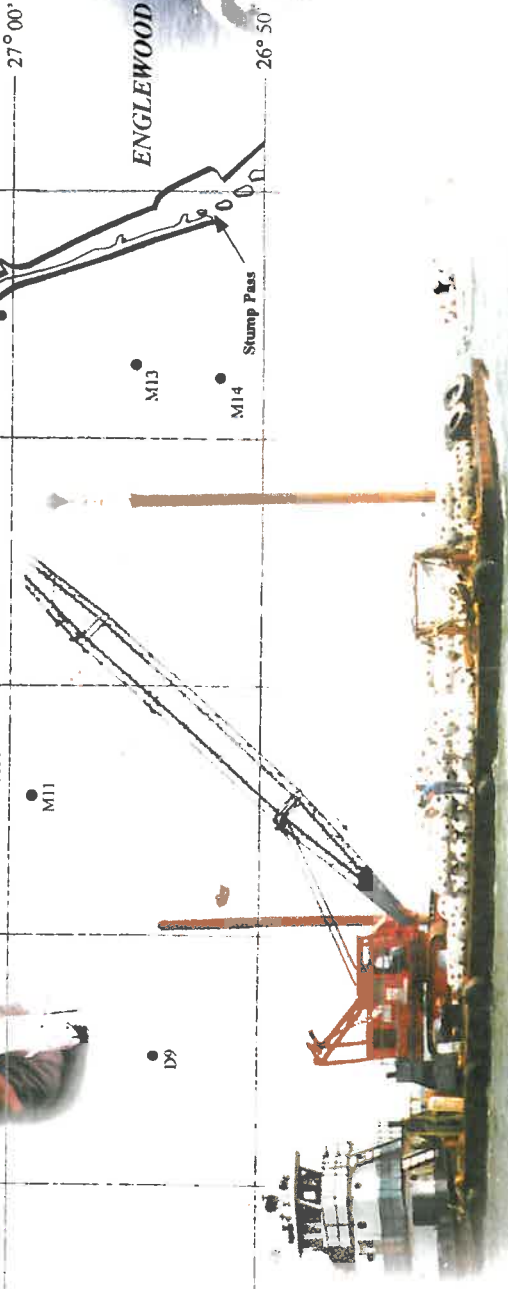
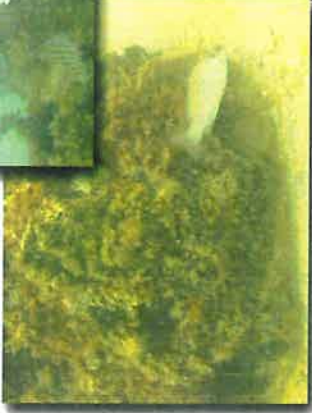
Gary Serviss Reef

Tom Wallin Reef

# Artificial Reefs

in

## Sarasota County



For more information call Sarasota County  
Call Center at 941-861-5000 and ask for  
Coastal Resources.



EN1.271-6/9/09 RECYCLED PAPER

# REEF LOCATIONS

Reef Site	LORAN-C		Latitude North	Longitude West	Distance (Naut. Miles) and heading from Pass	Depth (feet)	Materials
	7980-W	7980-Y					
<b>BAY REEFS</b>							
Hart's Family	14181.3	44440.7	27° 22.075'	82° 34.477'	N Sarasota Bay, E of ICW	10	Concrete, FPL Insulators, Reef Balls
O.D. Miller	14176.5	44430.0	27° 20.190'	82° 34.546'	City Island Fishing Piers	9- 21	Concrete Rubble
Pop Jantzen	14176.8	44421.1	27° 19.709'	82° 33.849'	NW of Bird Key Park	7	Concrete, FPL Insulators, Reef Balls
Jim Evans	14177.6	44417.9	27° 19.727'	82° 33.452'	S of Ringling Causeway	10	Concrete, FPL Insulators
Bully Powers	14174.8	44419.7	27° 18.862'	82° 34.292'	W of Otter Key	12	Concrete, FPL Insulators
Rose Coker	14176.9	44404.0	27° 18.698'	82° 32.537'	NE of Siesta Drive Bridge	7	Concrete, FPL Insulators
Jonnie Walker	14180.6	44452.6	27° 22.380'	82° 35.525'	NW of Ringling Causeway	12	Rocks, Boulders, Reef Balls
Sportfishing Anglers Club	14175.9	44446.2	27° 21.080'	82° 35.883'	NW of Ringling Causeway	12	Reef Balls
<b>GULF REEFS</b>							
I1-Lynn Silvertooth	14166.1	44423.6	27° 17.159'	82° 35.985'	1.8 at 177° - New Pass Buoy	30	Concrete boxes, Reef Balls, Ringling Causeway
I2-Alan Fisher	14166.1	44437.4	27° 18.111'	82° 37.125'	1.3 at 227° - New Pass Buoy	30	New Pass Bridge Rubble, Concrete Rubble, Piles
I3-Donald Roehr	14169.5	44425.8	27° 18.208'	82° 35.539'	0.9 at 146° - New Pass Buoy	22	Orange Avenue Bridge Rubble
Venice Reef	14153.5	44278.7	27° 04.587'	82° 27.509'	2.3 at 164° - Venice Inlet	23	Concrete Culvert
I4	14154.2	44302.6	27° 06.304'	82° 28.905'	0.7 at 236° - Venice Inlet	25	Venice Bridge and Pier
Gary Serviss	14155.8	44495.2	27° 19.172'	82° 43.164'	6.4 at 272° - New Pass Buoy	42	Steel Barge, Fiberglass Boats*, Concrete Culvert
Tom Wallin	14155.1	44490.4	27° 18.745'	82° 43.001'	6.2 at 268° - New Pass Buoy	42	Concrete Culverts, Boxes, Mixer Drums
M3	14149.8	44480.5	27° 16.717'	82° 43.261'	6.9 at 254° - New Pass	43	Concrete Culverts, Boxes, Mixer Drums
M4	14145.7	44470.7	27° 15.170'	82° 43.162'	7.4 at 239° - New Pass Buoy	42	Concrete Rubble, Reef Balls
M5	14141.4	44460.5	27° 13.422'	82° 43.131'	8.5 at 228° - New Pass Buoy	43	Concrete Culverts
M6	14135.4	44451.7	27° 11.301'	82° 43.595'	10.2 at 225° - New Pass	55	Fiberglass Boats*, Concrete Culverts, Mixer Drums
M7-Johnson	14137.8	44517.1	27° 16.281'	82° 48.043'	11.3 at 258° - New Pass	50	Boxcars, Concrete Culverts
Fallen Heroes CWO Kyle Jackson Trail	14128.1	44495.5	27° 12.528'	82° 48.121'	12.6 at 239° - New Pass Buoy	65	Five Army Tanks, Landing Craft, Boxcars, Reef Balls
M9	14121.0	44400.0	27° 04.189'	82° 42.103'	12.8 at 259° - Venice Inlet	61	Concrete Rubble, Five Army Tanks
M10	14114.8	44391.5	27° 01.887'	82° 42.583'	13.7 at 250° - Venice Inlet	65	Sailboat*, Fiberglass Boats*, Steel Barge
M11	14107.0	44377.7	26° 59.045'	82° 42.797'	15.1 at 239° - Venice Inlet	70	Reef Balls
M13	14129.9	44235.9	26° 55.099'	82° 27.882'	11.5 at 178° - Venice Inlet	43	Concrete Culvert
M14	14126.3	44209.7	26° 52.236'	82° 26.441'	5.7 at 255° - Stump Pass	43	Concrete Rubble
M15	14143.6	44325.8	27° 05.001'	82° 32.524'	4.3 at 246° - Venice Inlet	38	Concrete Rubble
M16	14134.1	44345.1	27° 03.827'	82° 35.625'	7.3 at 246° - Venice Inlet	49	Concrete Culverts, Catch Basins
Sarasota Sportsmen Association	14124.5	44364.6	27° 02.674'	82° 38.791'	10.4 at 246° - Venice Inlet	63	Reef Balls
MD1	14109.9	44519.1	27° 09.691'	82° 53.062'	18.0 at 240° - New Pass	80	Barge, Concrete Hopper
	14108.9	44518.8	27° 09.441'	82° 53.199'	21.6 at 276° - Venice Inlet		
D3	14091.9	44668.1	27° 15.931'	83° 07.207'	27.5 at 265° - New Pass	105	Boxcars
	14091.7	44668.4	27° 15.942'	83° 07.266'	35.0 at 286° - Venice Inlet		
D4	14090.9	44664.6	27° 15.440'	83° 07.136'	28.0 at 265° - New Pass	103	Boxcars
D6	14076.8	44579.7	27° 06.190'	83° 03.192'	25.2 at 220° - New Pass	110	Fiberglass Boats* and Molds
D-9	14066.1	44459.5	26° 54.719'	82° 55.893'	28.2 at 220° - New Pass	100	Steel Crane Barge, Fiberglass Boats*
V-1	14158.4	44292.1	27° 06.187'	82° 27.857'	.62 at 152° - Venice Inlet	17	Limestone boulders
V-2	14158.1	44291.2	27° 06.040'	82° 27.836'	.77 at 156° - Venice Inlet	17	Limestone boulders
V-3	14157.9	44289.4	27° 05.869'	82° 27.741'	.96 at 155° - Venice Inlet	17	Limestone boulders
V-4	14157.7	44288.5	27° 05.756'	82° 27.698'	1.08 at 156° - Venice Inlet	17	Limestone boulders
V-5	14154.8	44272.7	27° 03.916'	82° 26.998'	3.02 at 159° - Venice Inlet	17	Limestone boulders

All New Pass numbers taken from bell buoy  
 \* County no longer accepts fiberglass boats for reef construction

Artificial reefs have been constructed in Sarasota County to increase and enhance recreational fishing and scuba diving areas as well as to create and restore marine habitat lost to coastal development. Remember to use proper catch and release fishing practices.

Avoid propeller cuts through the sea grass beds. These scars take at least five to ten years to heal. Sea grass beds are vital nursery areas providing food and shelter for fish and other marine life. Please use extreme caution in shallow waters.

Please be aware that manatees inhabit our waters. The Florida manatee is a gentle, harmless creature who lives on a diet of

aquatic plants. Although a protected species, many are killed or injured each year through human carelessness, marine debris and motorized vessels.

Funding for the construction of artificial reefs comes from the Florida Artificial Fishing Reef Grant, Saltwater Fishing License fees, the Sarasota Bay National Estuary Program and Sarasota County Coastal Resources.

Distributed Courtesy of the offices of Barbara Ford-Coates, Tax Collector.